

Erlanger Square

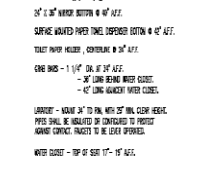
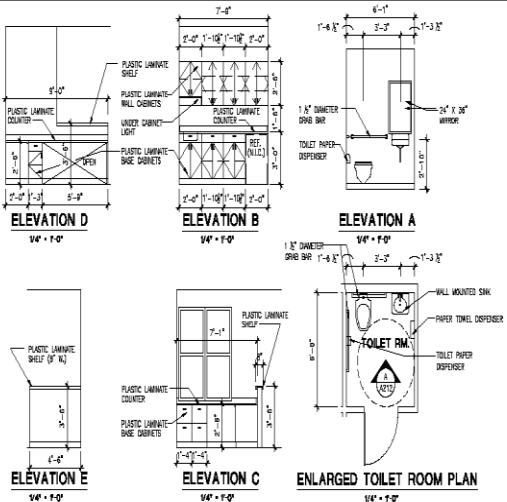


Building Design Features

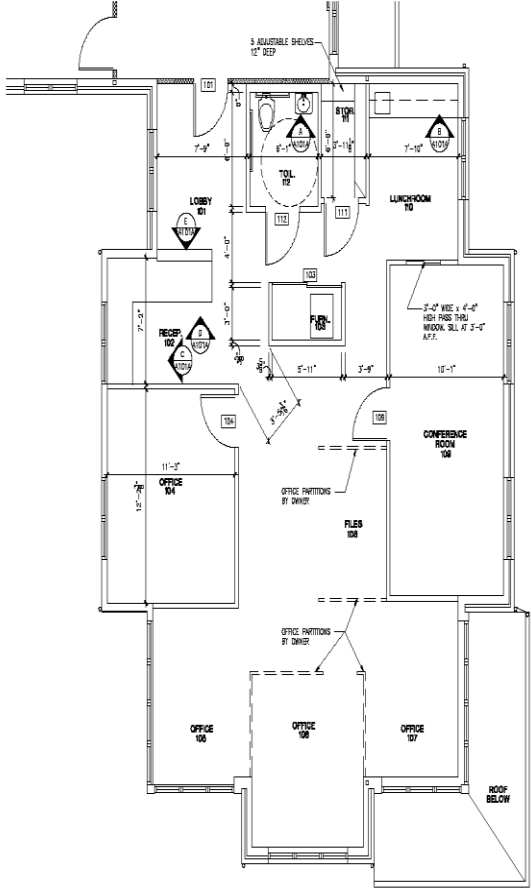
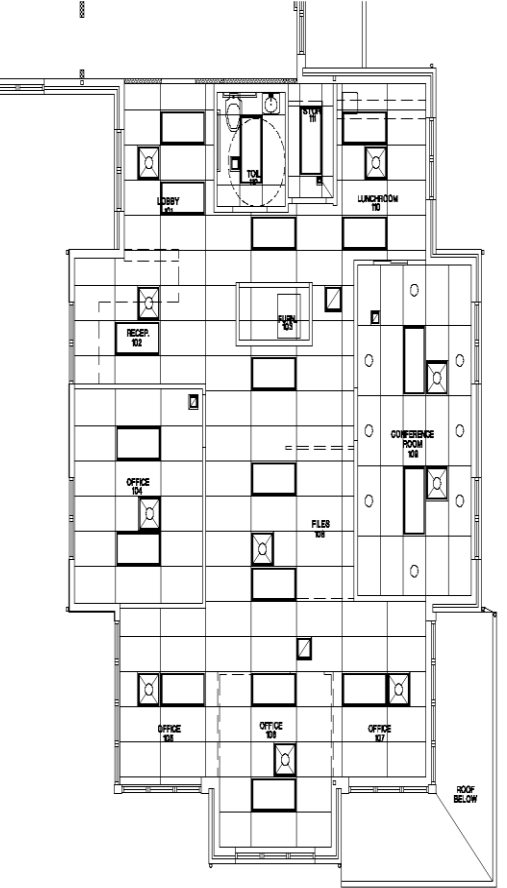
Erlanger Square is the newest building on the block but has used a tumble brick to give it that old world feel. The building can accommodate most size businesses from 800 Square feet on up and with the ability with flexible floor plans.

- Flexible floor plan
- 12,000 Square Feet
- Signage opportunities
- Private Restrooms in each office suite
- 9 Foot ceilings
- Lease

Building Layout – First Floor and Second Floor



3" x 3" SINK WITHIN 4" AFF.
 SURFACE WAXED PAPER TOWEL DISPENSER WITHIN 4" AFF.
 TOILET PAPER HOLDER - CENTERLINE 4" AFF.
 CUBE BIN - 1 1/2" DIA. AT 37" AFF.
 - 2" LOW BOARD WATER COUPLER
 - 1/2" DIA. WAXED WOOD CONES
 UNITS - NAME 3" TO THE KEY 3" WALL CLEAR HEIGHT
 PIPES SHALL BE INSULATED OR CONTAINED TO PREVENT
 AROUND CONTACT. FRANCES TO BE LEVEL SPACERS.
 WATER COUPLER - TOP OF SINK 17" AFF.



GENERAL NOTES

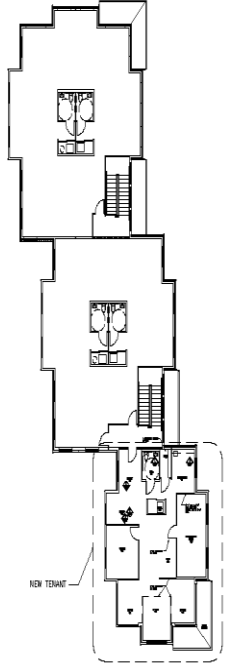
VERIFY ALL DIMENSIONS PRIOR TO CONSTRUCTION
 ALL DIMENSIONS ARE FROM FACE OF STUD UNLESS NOTED OTHERWISE

CODE NOTES

CONSTRUCTION TYPE: VB
 USE GROUP: B - BUSINESS
 TENANT AREA: 1,338 S.F.

WALL TYPES

- 1. HR. RATED WALL
 2" x 4" WOOD STUDS @
 16" O.C. W/ 1/2" FIBRECE
 CEMENT BOARD EACH SIDE
 UL DESIGN NO. L214
- NON-RATED PARTITIONS
 3 1/2" METAL STUDS @
 16" O.C. W/ 1/2" GYPSUM
 BOARD EACH SIDE
 PROVIDE SOUND BATS IN ALL
 TOILET, MECH ROOM, AND
 TENANT SEPARATION WALLS.
 CARRY WALL TO 8'-0" AFF.



OWNER: []
 THIS DOCUMENT IS THE PROPERTY OF THE DESIGNER AND SHALL NOT BE REPRODUCED OR TRANSMITTED IN ANY FORM OR BY ANY MEANS, ELECTRONIC OR MECHANICAL, INCLUDING PHOTOCOPYING, RECORDING, OR BY ANY INFORMATION STORAGE AND RETRIEVAL SYSTEM, WITHOUT THE WRITTEN CONSENT OF THE DESIGNER.

DESIGNED BY: BC
 REVISIONS:

TRIANGLE DESIGN GROUP
 DESIGN GROUP, INC.
 IERLANGER SQUARE I
 EIRLANGER, KENTUCKY
 EIRLANGER ROAD
 EIRLANGER, KENTUCKY 40311-0001

HUB & WEBER, P.S.C.
 PROFESSIONAL ENGINEERS
 605 GARDNER STREET, COVINGTON, KENTUCKY 40311-0001

07-16-01
 TRIANGLE DESIGN GROUP
 A101B
 007248